

CASE STUDY

Murrayhill



Tree for All engages communities large and small in conservation projects throughout the Tualatin River Watershed in Oregon.

JOINTREEFORALL.ORG

Partnership and Stewardship Bring Nature Back into the Backyard

MURRAYHILL, a residential area of South Beaverton, is home to the headwaters of Summer Creek. In an urban forest embedded with popular trails and sidewalks, this restoration project demonstrates how collaboration and stewardship can bring Mother Nature back into the urban landscape and provide significant benefits for water quality, wildlife and the community.



The Site

SIZE 1 acre

FIRST PLANTING 2014

TOTAL TO DATE 5000 plants



Habitat
Connectivity



Recreation &
Human Health



Urban
Partnership



Protects
Water Quality

The Challenge

The Murrayhill project provides an opportunity for multiple organizations to collaborate for a common purpose: Enhancing stream and riparian health. All of the site property is privately owned, which requires an extra level of coordination and communication.

Stakeholders include the Murrayhill Owners Association (MOA), Andover Apartments and the Murrayhill Recreation Association, as well as the owners of adjacent properties.

The majority of the upper project is dominated by large, mature trees, while the lower portions had been impacted heavily by invasive plants and trees. The project was largely funded by two grants from the Oregon Watershed Enhancement Board, with additional support from the MOA, City of Beaverton, Tualatin River Watershed Council, Cascade Education Corps, and Clean Water Services.



Restoration of the Summer Creek Headwaters has enhanced residents' access to nature and provided the opportunity to witness wildlife in their backyards.

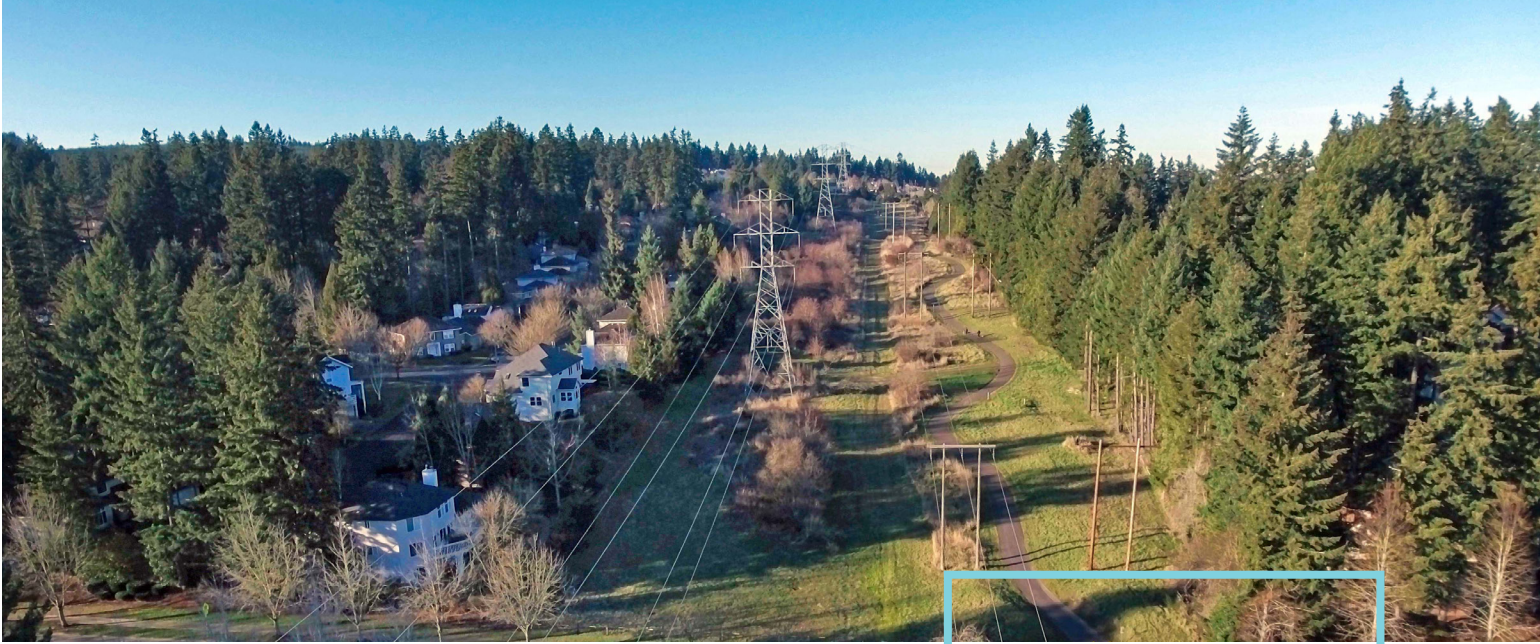


The Transformation

—
With help from all the partners, and the work of hundreds of volunteers, this site has been transformed from a weedy patch of briars and thorns to a thriving, highly diverse riparian forest.

Blackberry and other invasive species were removed and replaced with more than 5,000 native plants. These deep-rooted native plants stabilize the stream banks and shade the water. In doing so, they reduce stormwater runoff and stream bank erosion, cool the water, and provide habitat for a diverse array of wildlife.

Restoration of the Summer Creek Headwaters has enhanced residents' access to nature and provided them with the opportunity to witness wildlife in their own backyards. Additionally, the benefits provided at the site will positively impact downstream riparian areas and magnify the effects of restoration efforts at nearby sites such as Summer Lake Park and Dirksen Nature Park.



Together, more than 35 partners are achieving what none of us could alone.

—
Collaboration among community, municipal, and conservation organizations makes large-scale change and long-term stewardship possible. Public-private partnerships within Washington County improve water quality, sustain native species and support diverse and complex habitats. The result? Better outcomes for human health, ecology and the economy.



Since 2005, Tree for All partners have restored and managed more than 25,000 acres for watershed health.

Learn more about TFA partners at jointreeforall.org/partners

Key Partners

